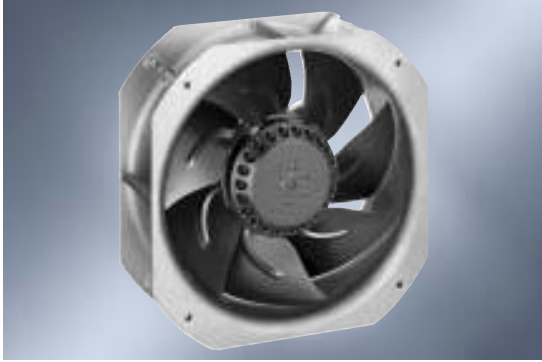


AC axial fans

Ø 200

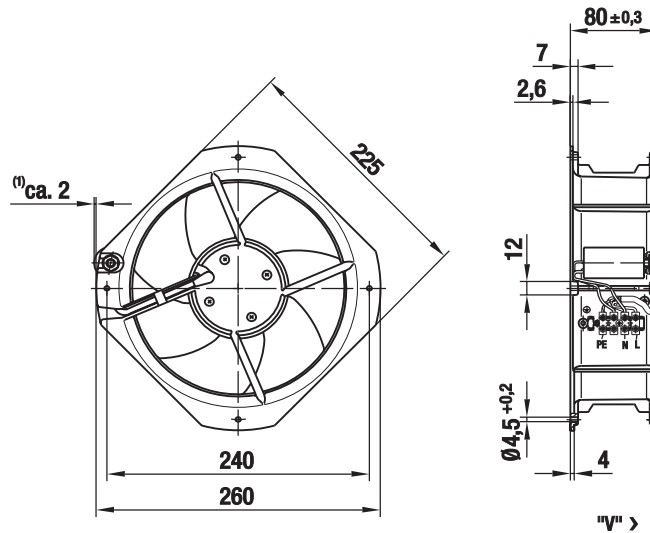
- **Material:** housing made of die-cast aluminium, impeller made of sheet steel (directly welded onto rotor and stove-enamelled in black)
- **Bearings:** maintenance-free ball bearings
- **Direction of rotation:** counter-clockwise, seen on rotor
- **Direction of air flow:** "V", blowing over struts
- **Connection leads:** wired with capacitor on terminal strip
- **Motor protection:** integrated thermal overload protector
- **Approvals:** UL, VDE, CSA, CE

ebm-papst • Muldingen



Nominal data		Characteristic	Voltage	Frequency	Air flow	Speed/rpm	Power input	Current draw	Capacitor	Noise level	Max. back pressure	Perm. amb. temp.	Mass	Direction of air flow
Type	Motor		VAC	Hz	m³/h	min⁻¹	W	A	µF/VDB	dB(A)	Pa	°C	kg	
W2E 200-HK86 -01	M2E 068-BF	②	115	50	925	2550	64	0,58	5,0/220	59	100	60	2,0	"V"
			115	60	1030	2800	80	0,70	5,0/220	61	120	65		
W2E 200-HK38 -01	M2E 068-BF	②	230	50	925	2550	64	0,29	1,5/400	59	100	60	2,0	"V"
			230	60	1030	2800	80	0,35	1,5/400	61	120	65		

subject to alterations



Characteristics

